



STAPLETON DERBY



Bishop Road, St. Helens, WA10 6SS

£280,000

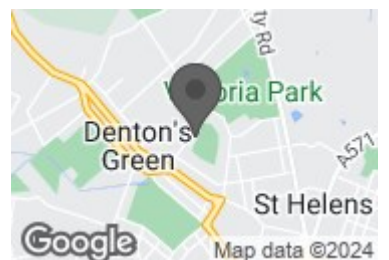
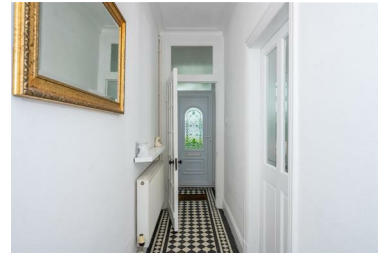


Stapleton Derby are delighted to offer for sale this charming semi-detached house on Bishop Road, St. Helens! This property boasts original features and character, making it a unique find in the area. With two reception rooms, three bedrooms, and a bathroom, there is plenty of space for comfortable living.

The secluded gardens surrounding the property offer a peaceful retreat, perfect for relaxing or entertaining guests. The excellent location of this house provides easy access to local amenities, schools, and transport links, making it a convenient choice for families or professionals.

Don't miss the opportunity to own this lovely home with its traditional charm and modern comforts. Contact us today to arrange a viewing

- SEMI DETACHED
- GAS CENTRAL HEATING
- ORIGINAL FEATURES
- EXCELLENT LOCATION OPOSITE THE PLAYING FIELDS
- GARDEN FRONTED AND SECLUDED REAR GARDEN
- THREE BEDROOMS
- DOUBLE GLAZED
- CLOSE TO GOOD QUALITY SCHOOLS
- MOTORWAY LINKS AND AMENITIES NEARBY
- VIEWING RECOMMENDED



73-75 Corporation Street, St Helens, WA10 1SX

Tel: 01744 883 322 Email: info@stapletonderby.co.uk www.stapletonderby.co.uk