



1 Victoria Villas, Prescot, L35 0LJ

By Auction £310,000



Being Sold via Secure Sale online bidding. Terms & Conditions apply. Starting Bid £310,000
Immediate 'exchange of contracts' available - Sold via 'Secure Sale'

Pattinson Auction are working in Partnership with the marketing agent on this online auction sale and are referred to below as 'The Auctioneer'.

This auction lot is being sold either under conditional (Modern) or unconditional (Traditional) auction terms and overseen by the auctioneer in partnership with the marketing agent.

The property is available to be viewed strictly by appointment only via the Marketing Agent or The Auctioneer. Bids can be made via the Marketing Agents or via The Auctioneers website.

Please be aware that any enquiry, bid or viewing of the subject property will require your details being shared between both any marketing agent and The Auctioneer in order that all matters can be dealt with effectively.

The property is being sold via a transparent online auction.

In order to submit a bid upon any property being marketed by The Auctioneer, all bidders/buyers will be required to adhere to a verification of identity process in accordance with Anti Money Laundering procedures. Bids can be submitted at any time and from anywhere. Our verification process is in place to ensure that AML procedure are carried out in accordance with the law.

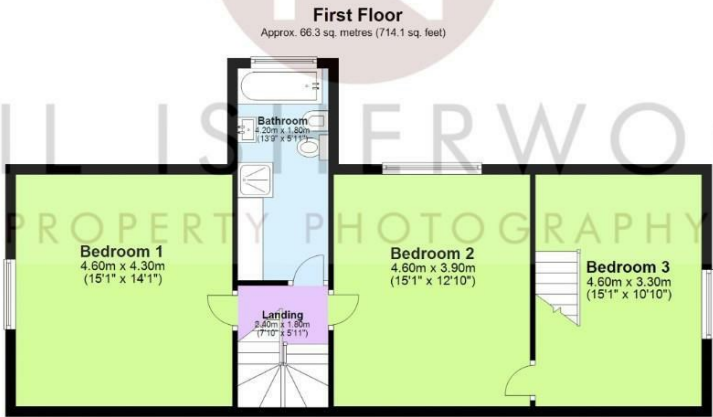
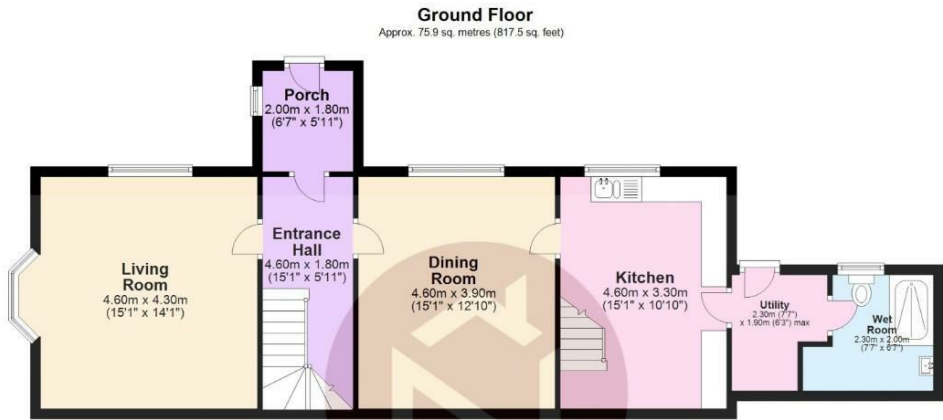




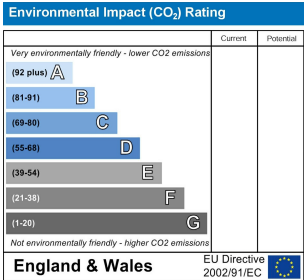
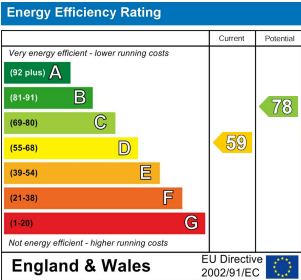




Stapleton Derby
 497 Warrington Road Rainhill, Merseyside, L35 0LR
 Tel: 0151 430 0717
 office@stapletonderby.co.uk
 www.stapletonderby.co.uk



Total area: approx. 142.3 sq. metres (1531.6 sq. feet)
 This floor plan was created by Neil Isherwood Property Photography. This is not to scale, all measurements are made with a laser measure to be as accurate as possible, but we hold no responsibility for any errors.
 Plan produced using PlanUp.



IMPORTANT NOTICE TO PURCHASERS
 We endeavor to make our sales particulars accurate and reliable, however, they do not constitute or form part of an offer or any contract and none is to be relied upon as statements of representation or fact. Any services, systems and appliances listed in this specification have not been tested by us and no guarantee as to their operating ability or efficiency is given. All measurements have been taken as a guide to prospective buyers only, and are not precise. If you require clarification or further information on any points please contact us. Fixtures and fittings other than those mentioned are to be agreed with the seller.