



STAPLETON DERBY



Axbridge Avenue, St. Helens, WA9 4NZ

Offers Over £285,000



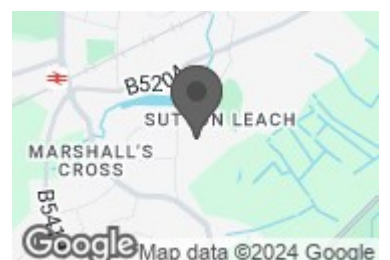
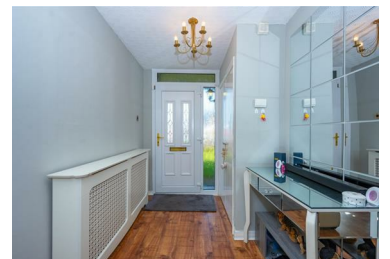
Welcome to this charming detached family home located on Axbridge Avenue in the sought-after area of Sutton Leach, St. Helens. This property boasts a spacious hallway with a stunning staircase, there is a bright and airy reception room, modern fitted kitchen and dining room. First floor landing serving three good size double bedrooms, modern bathroom with a double step in shower cubicle.

Externally there are double gates leading to the front garden area plus a driveway with ample parking for several vehicles.

Situated in a popular location, this home offers easy access to motorway links, making commuting a breeze. The detached garage provides convenient parking and extra storage space for your belongings.

This property has been fully modernised throughout, ensuring a contemporary and comfortable living experience for its new owners. Don't miss the opportunity to make this spacious detached house your new home sweet home. Viewing strongly recommended

- DETACHED FAMILY HOME
- POPULAR LOCATION
- CLOSE TO MAJOR MOTORWAY LINKS
- FREEHOLD
- ATTACHED GARAGE
- THREE BEDROOMS
- MODERNISED THROUGHOUT
- GAS CENTRAL HEATING AND DOUBLE GLAZED
- FRONT AND REAR GARDENS
- VIEWING STRONGLY RECOMMENDED



73-75 Corporation Street, St Helens, WA10 1SX

Tel: 01744 883 322 Email: info@stapletonderby.co.uk www.stapletonderby.co.uk