



# STAPLETON DERBY



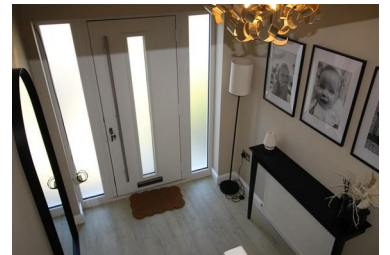
Stanley Avenue, St. Helens, WA11 8HU

£1,400



Stapleton Derby are pleased to offer for let this modern three bed semi-detached house located in the lovely rural village of Rainford. The property comprises of an open plan living room through dining room and then onto the kitchen and garden at the rear. Upstairs presents three good sized bedrooms and a family bathroom. The property is located close to local schools and amenities.

Rent - £1,400  
Deposit - £1,615  
Council Tax Band - C  
EPC Rating - C



73-75 Corporation Street, St Helens, WA10 1SX

Tel: 01744 883 322 Email: [info@stapletonderby.co.uk](mailto:info@stapletonderby.co.uk) [www.stapletonderby.co.uk](http://www.stapletonderby.co.uk)