



52 Ormskirk Road, St. Helens, WA11 8DB

£349,995



**STAPLETON
DERBY**

Situated on Ormskirk Road in the charming village of Rainford, St. Helens, this delightful three-bedroom fully refurbished detached property is a gem waiting to be discovered. Boasting three reception rooms, two bathrooms, and a spacious layout, this home offers a perfect blend of comfort and style.

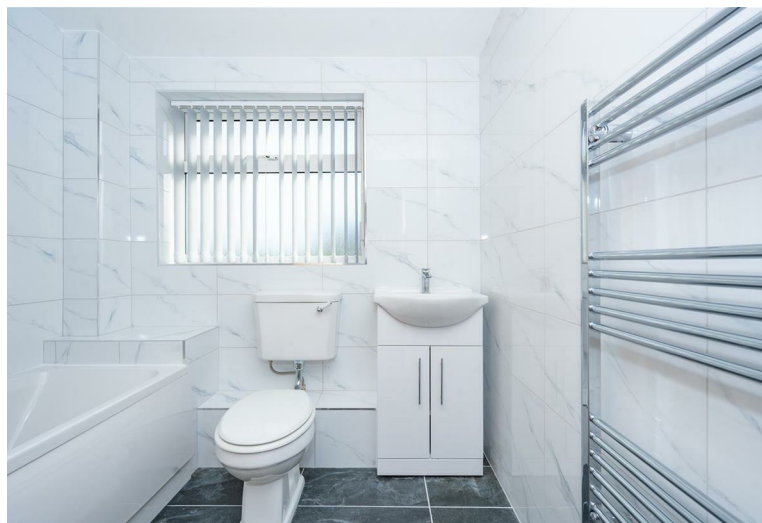
Upon entering, you are greeted by an inviting entrance hall that leads to a shower room/wc, ideal for freshening up after a long day. The ground floor features a lounge, dining room, sitting room, and a well-equipped kitchen, providing ample space for entertaining guests or simply relaxing with your loved ones.

Venture upstairs to find three generously sized bedrooms, offering plenty of room for a growing family or accommodating guests. The family bathroom ensures convenience and comfort for all residents.

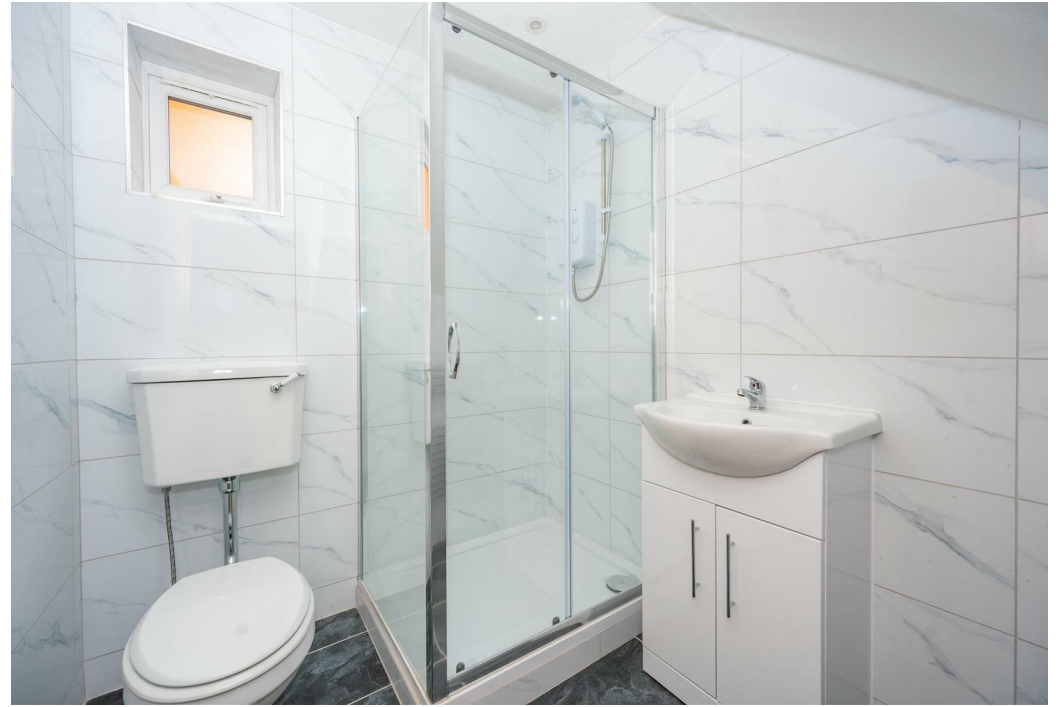
Outside, the property boasts a front and side garden, perfect for enjoying a morning cup of tea or basking in the afternoon sun. Additionally, a large paved rear patio area provides a great space for outdoor dining or hosting summer gatherings.

With its prime location near the centre of Rainford Village, this fully refurbished property is nestled in a sought-after residential area, offering a peaceful retreat from the hustle and bustle of city life. The absence of a chain makes this home an even more attractive prospect for those looking to make a swift and hassle-free move.

In conclusion, this three-bedroom detached property is a rare find that combines modern living with traditional charm. Don't miss the opportunity to make this house your home - schedule a viewing today and experience the allure of this wonderful property for yourself.









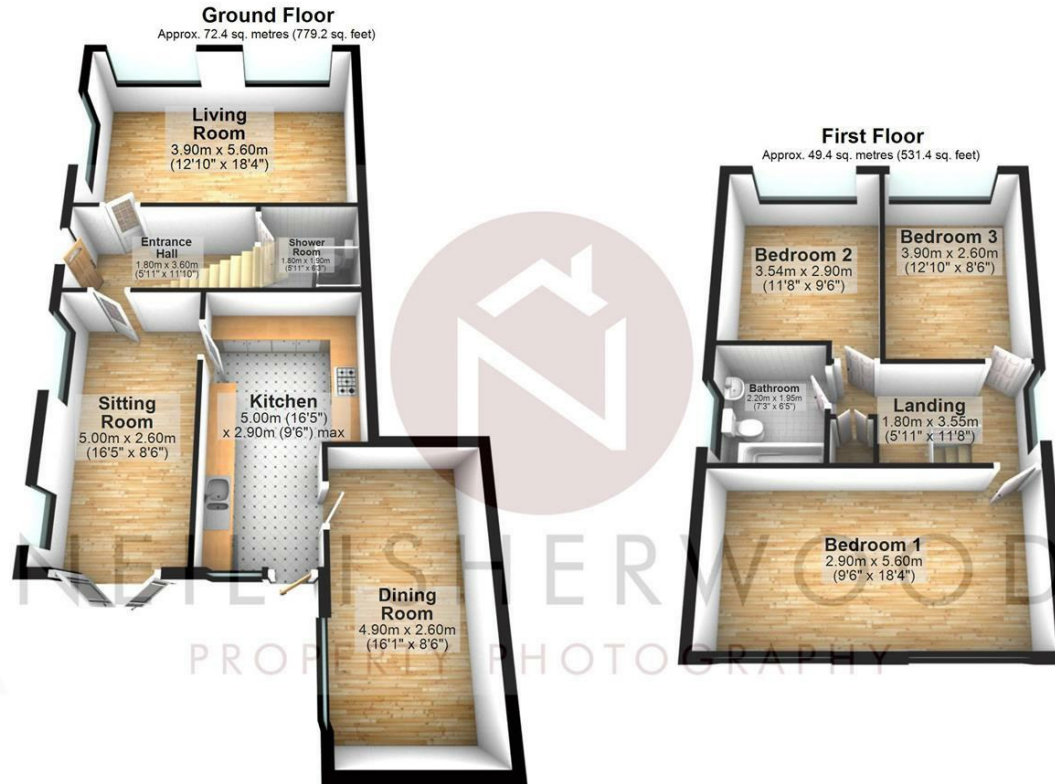
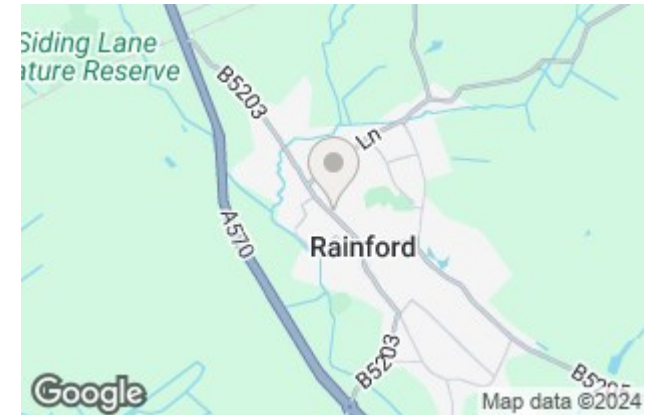
Stapleton Derby

1 The Old Smithy, Church Road, Rainford, St Helens, WA11 8HD

Tel: 0151 430 0717 01744 889 999

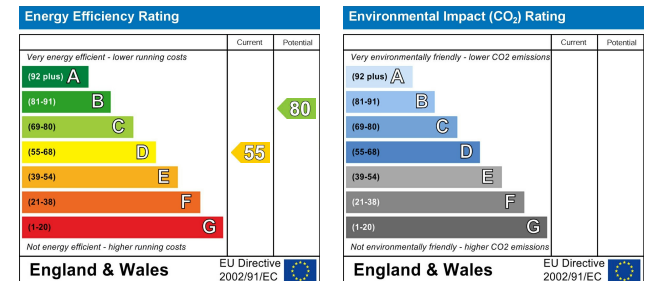
office@stapletonderby.co.uk

www.stapletonderby.co.uk



Total area: approx. 121.8 sq. metres (1310.5 sq. feet)

This floor plan was created by Neil Isherwood Property Photography. This is not to scale, all measurements are made with a laser measure to be as accurate as possible, but we hold no responsibility for any errors.
Plan produced using PlanUp.



IMPORTANT NOTICE TO PURCHASERS

We endeavor to make our sales particulars accurate and reliable, however, they do not constitute or form part of an offer or any contract and none is to be relied upon as statements of representation or fact. Any services, systems and appliances listed in this specification have not been tested by us and no guarantee as to their operating ability or efficiency is given. All measurements have been taken as a guide to prospective buyers only, and are not precise. If you require clarification or further information on any points please contact us. Fixtures and fittings other than those mentioned are to be agreed with the seller.