



66 Bravery Court, Liverpool, L19 2QY

£125,000



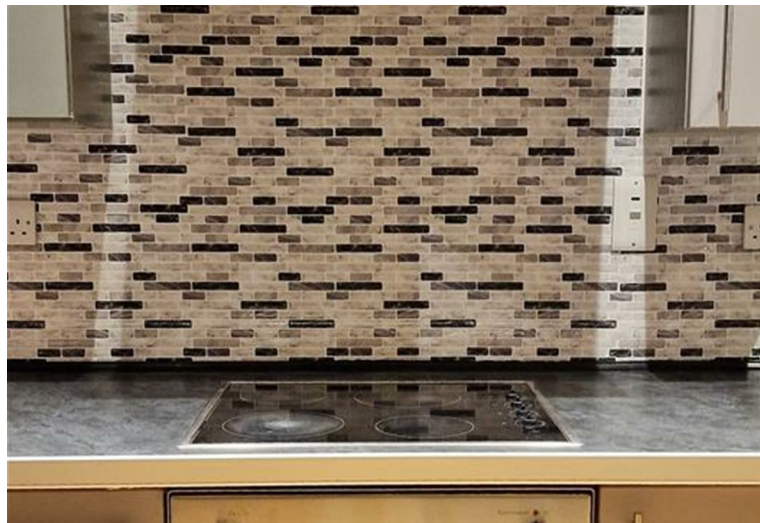
**STAPLETON  
DERBY**

Nestled in the heart of Bravery Court, Liverpool, this charming 2-bedroom flat is a true gem waiting to be discovered. Situated in Speke, this property boasts convenience with its proximity to various transport links and amenities, making everyday life a breeze.

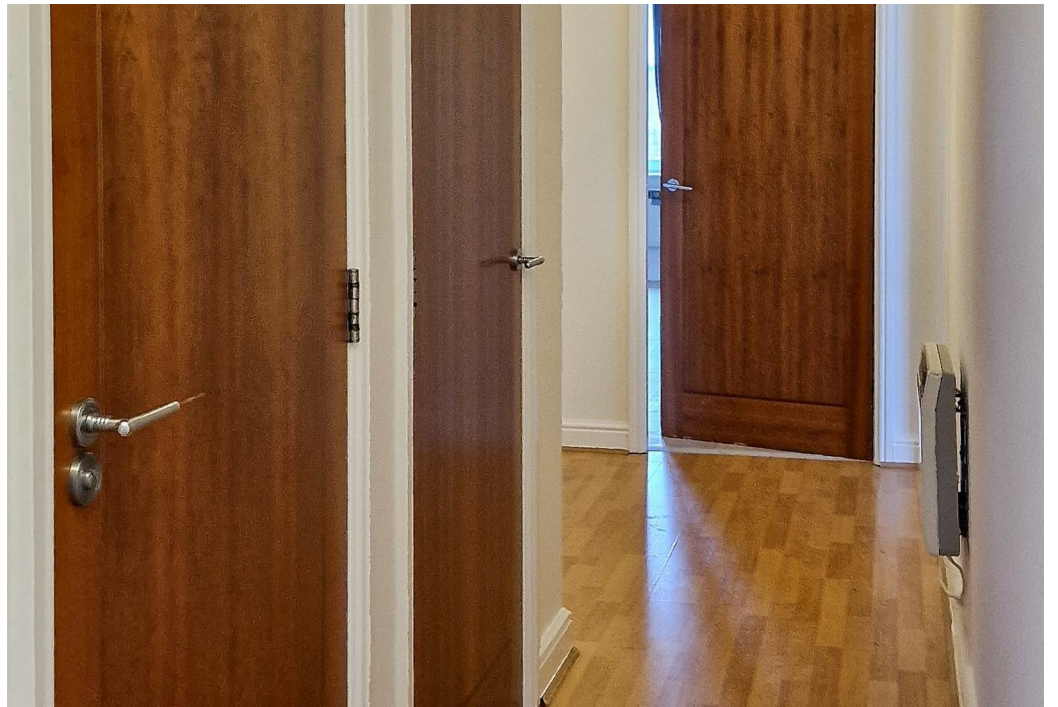
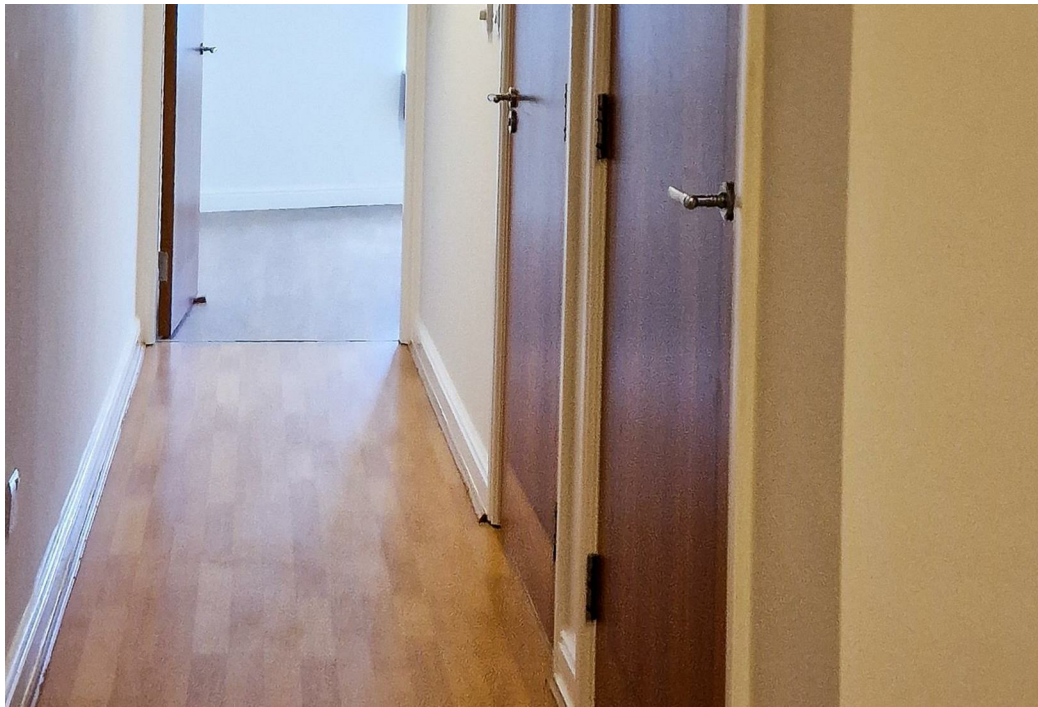
As you step into this spacious abode, you are greeted by a large hallway that sets the tone for the rest of the apartment. The highlight of this flat is the generously sized open plan kitchen, dining, and living area, perfect for entertaining guests or simply relaxing in style. The addition of a Juliet balcony floods the space with natural light, creating a warm and inviting atmosphere.

The master bedroom comes complete with an en suite, offering a touch of luxury and privacy. Meanwhile, the second bedroom provides ample space for a double bed, ensuring comfort for residents or guests. A spacious family bathroom adds to the convenience and practicality of this lovely flat.

This property, the largest apartment on the complex, is a rare find and is sure to attract those seeking a blend of comfort, style, and convenience. With its desirable location and well-appointed living spaces, this flat is a must-see for anyone looking to make a move. Don't miss out on the opportunity to make this apartment your own - schedule a viewing today by calling 01744 889999.









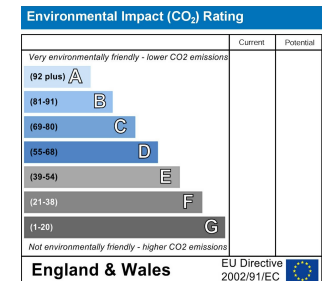
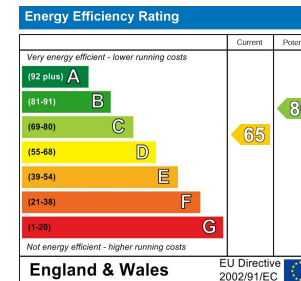
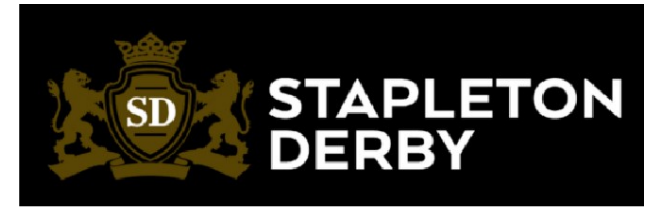
**Stapleton Derby**

1 The Old Smithy, Church Road, Rainford, St Helens, WA11 8HD

Tel: 0151 430 0717 01744 889 999

office@stapletonderby.co.uk

www.stapletonderby.co.uk



**IMPORTANT NOTICE TO PURCHASERS**

We endeavor to make our sales particulars accurate and reliable, however, they do not constitute or form part of an offer or any contract and none is to be relied upon as statements of representation or fact. Any services, systems and appliances listed in this specification have not been tested by us and no guarantee as to their operating ability or efficiency is given. All measurements have been taken as a guide to prospective buyers only, and are not precise. If you require clarification or further information on any points please contact us. Fixtures and fittings other than those mentioned are to be agreed with the seller.